

# The Image of Versatility

Powerful Enough For Today.  
Flexible Enough For Tomorrow.

Take your network's printing capabilities to a whole new level. The Sharp AR-P350 Imager delivers the speed and quality you would expect from an advanced digital printer, along with a surprising range of additional capabilities. Its extraordinary versatility lets you print in ways you may never have printed before. With the AR-P350 Imager, you have the ability to utilize special print media, such as overhead transparencies, envelopes and heavy stocks. Its optional finishing capabilities include hole punching, folding, multi-position stapling, and the unique ability to support both saddle stitching and a mail bin stacker. There's even optional software that allows team members to protect confidential documents. And, because the AR-P350 Imager is a fully modular system, it's easy to add new capabilities as your needs change.

## A Powerful Blend of Features, Functionality and Flexibility

### Efficient 35 ppm Networking Printing

- *Job Retention functions*<sup>1</sup> (hold/sample/confidential) allow you to control printout from the control panel
- 600 dpi and 1,200 dpi equivalent resolution with smoothing technology
- Compatible with PCL5e/6 (standard) and PostScript Level 3 (option)
- Various image editing functions: B&W Reverse, Mirror Image, watermarks, Fit to Page, etc.
- Optional large-capacity HDD
- Status Monitor lets you monitor printer activities
- Duplex printing capability
- Toner Save mode
- Optional Saddle-Stitch Finisher
  - Optional 2/3 hole punch unit to expand your finishing capabilities
  - Automatically V-folds
  - Ability to hole-punch and saddle-stitch same document
- Optional Mail Bin Stacker

<sup>1</sup> Requires optional hard disk drive



Paper trays provide flexibility for different print media.



Optional saddle-stitch finisher delivers versatile capabilities.



Flexible and user-friendly, the Sharp AR-P350 Imager delivers the speed and quality you expect, plus the versatility your busy office demands.

**SHARP**®

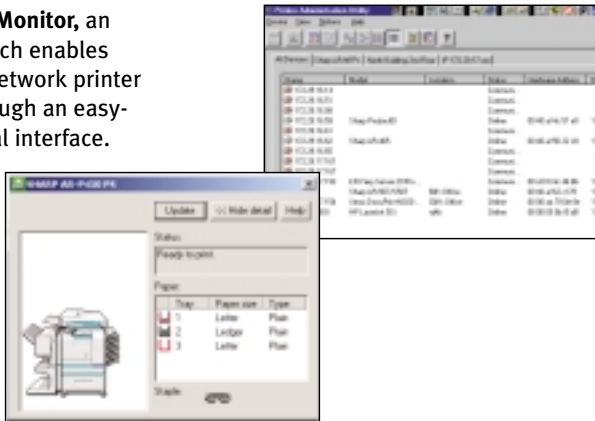
Digital  
**IMAGER**™  
Advanced Workgroup System

## AR-P350 Printing Capabilities

**Sharp Print Utilities** ▶  
Includes **Printer Administration Utility Software** for Network Administrators to monitor any SNMP-compliant printer on the network.

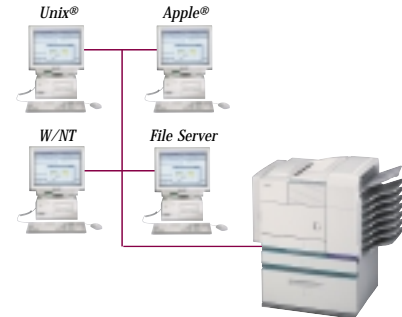


**Printer Status Monitor**, an application which enables users to view network printer conditions through an easy-to-use graphical interface. It even notifies you when your job is complete! ▶



### Efficient Network Printing

With 1200-dpi equivalent laser printing, the AR-P350 Imager is perfect for workgroups and small businesses.



### ▼ PCL5e/PCL6 Print Drivers



## Specifications

### General

Type:	Console
Copy system:	Dry, electrostatic transfer system
Paper size:	Max. 11" x 17" / Min. 5.5" x 8.5"
Paper capacity:	500 sheets, expandable up to 3,100 sheets with options
Copy/print speed:	Max. 35 cpm/ppm (8.5" x 11")
Memory:	32MB, upgradable to 288MB with options, 5GB HDD
Warm-up time <sup>2</sup> :	Less than 80 seconds
Power requirements:	Rated local AC voltage ± 10%, 50/60 Hz
Power consumption:	Max. 1.53 kW
Dimensions (WxDxH) <sup>3</sup> :	25 3/4" x 22 21/64" x 23 11/32"
Weight <sup>3</sup> :	Approx. 50 kg (110.3 lbs)

### Printer

Resolution:	600 dpi, 1,200 dpi equivalent with smoothing technology
Interface:	IEEE 1284 parallel port
Printer drivers:	Windows® 95/98/Me, Windows NT® 4.0, Macintosh System 8.5.1-9x
PDL (emulsion):	PCL5e, PCL6, PostScript Level 3 (option)
Available fonts:	45 fonts for HP PCL, 136 fonts for PS (with optional AR-PK1)

**Other features:** Paper/output tray selection, duplex print, watermarks, pamphlet style, staple (3 patterns), job retention for confidential sample print, N-up, B&W reverse, mirror image, form overlay, fit to page, auto configuration, easy print (stores settings), confidential print, sample print. Note: some features are not available according to the printer driver used.

### Print Server Card (optional AR-NC5J)

Hardware interface:	10Base-T, 100Base-TX
Support platforms:	UNIX, Windows 95/98/Me, Windows NT 4.0, Windows 2000, Novell Netware 3.x/4.x (IntranetWare)/Netware5, Macintosh System 8.5.1-9.x
Network protocols:	IPX/SPX for Novell environments, TCP/IP for Windows and UNIX environments, EtherTalk for Macintosh environments
Printing protocols:	Novell Printserver Application w/ NCS and Bindery, Printer resident LPD (includes reaction to LPO request), TCP FTP for downloading of print files, Ethernalk printing, IPP, NetBEUI for Windows

Design and specifications are subject to change without notice. Sharp is a registered trademark of Sharp Corporation.

All trademarks and registered trademarks are of their respective holders.

<sup>2</sup>At rated voltage, 20° c (68° f), 65% RH.

<sup>3</sup>Dimensions and weight include multi-purpose trays.

**SHARP**  
FROM SHARP MINDS  
COME SHARP PRODUCTS™

SHARP ELECTRONICS CORPORATION  
Network Office Systems Group • Sharp Plaza, Mahwah, NJ 07430-2135  
1-800-BE-SHARP • www.sharp-usa.com



As an ENERGY STAR® Partner, SHARP has determined that this product meets the ENERGY STAR® guidelines for energy efficiency.