

The Power of Productivity

The Flexibility and Speed to Meet Your Needs

When it comes to efficient and high-quality printing, the Sharp AR-P450 Imager is an easy decision. With 1,200 dpi equivalent resolution, 256 shades of grayscale, and a printing speed of 45 pages per minute, the AR-P450 Imager delivers printing speed and quality that is truly best-in-class—with crisp, clear text and remarkably detailed images. Combining a high-capacity 3,100 sheet paper reserve with broad operating system compatibility, the AR-P450 Imager can easily be shared by computers of virtually any workgroup. It has a wealth of optional finishing capabilities, including hole punching, folding, multi-position stapling, and the unique ability to support both saddle stitching and a mail bin stacker. And the AR-P450 Imager's proprietary Sharp Print Utilities software even makes monitoring print conditions a snap.

A Powerful Blend of Features, Functionality and Flexibility

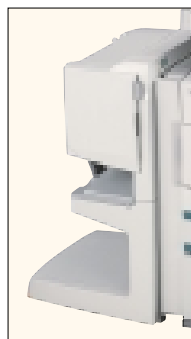
Efficient 45 ppm Networking Printing

- Job Retention functions¹ (hold/sample/confidential) allow you to control printout from the control panel
- 600 dpi and 1,200 dpi equivalent resolution with smoothing technology
- Compatible with PCL5e/6 (standard) and PostScript Level 3 (option)
- Various image editing functions: B&W Reverse, Mirror Image, watermarks, Fit to Page, etc.
- Optional large-capacity HDD
- Status Monitor lets you monitor printer activities
- Duplex printing capability
- Toner Save mode
- Optional Saddle-Stitch Finisher
 - Optional 2/3 hole punch unit to expand your finishing capabilities
 - Automatically V-folds
 - Ability to hole-punch and saddle-stitch same document
- Optional Mail Bin Sorter

¹ Requires optional hard disk drive



Paper trays provide flexibility for different print media.



Optional saddle-stitch finisher delivers versatile capabilities.



Designed to support an entire workgroup, the Sharp AR-P450 Imager's unique modularity includes a saddle stitcher, mail bin stacker or the versatility of both.

SHARP®

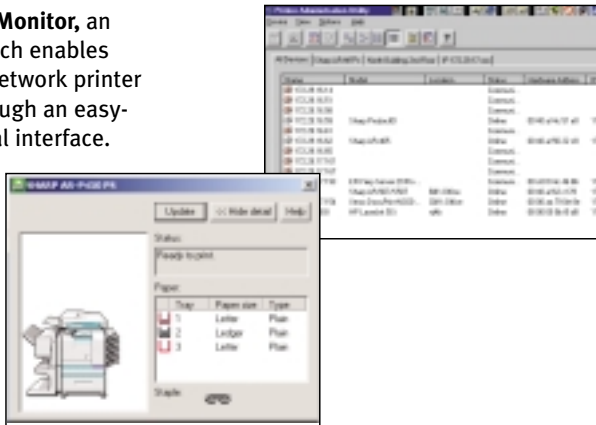
Digital
IMAGER™
Advanced Workgroup System

AR-P450 Printing Capabilities

Sharp Print Utilities ▶
Includes **Printer Administration Utility Software** for Network Administrators to monitor any SNMP-compliant printer on the network.

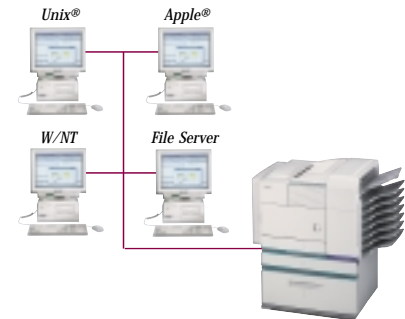


Printer Status Monitor, an application which enables users to view network printer conditions through an easy-to-use graphical interface. It even notifies you when your job is complete! ▶



Efficient Network Printing

With 1200-dpi equivalent laser printing, the AR-P450 Imager is perfect for workgroups and small businesses.



▶ PCL5e/PCL6 Print Drivers



Specifications

General

Type:	Console
Copy system:	Dry, electrostatic transfer system
Paper size:	Max. 11" x 17" / Min. 5.5" x 8.5"
Paper capacity:	500 sheets, expandable up to 3,100 sheets with options
Copy/print speed:	Max. 45 cpm/ppm (8.5" x 11")
Memory:	32MB, upgradable to 288MB with options, 5GB HDD
Warm-up time ² :	Less than 80 seconds
Power requirements:	Rated local AC voltage \pm 10%, 50/60 Hz
Power consumption:	Max. 1.53 kW
Dimensions (WxDxH) ³ :	25 3/4" x 22 21/64" x 23.11/32"
Weight ³ :	Approx. 50 kg (110.3 lbs)

Printer

Resolution:	600 dpi, 1,200 dpi equivalent with smoothing technology
Interface:	IEEE 1284 parallel port
Printer drivers:	Windows® 95/98/Me, Windows NT® 4.0, Macintosh System 8.5.1-9.x
PDL (emulsion):	PCL5e, PCL6, PostScript Level 3 (option)
Available fonts:	45 fonts for HP PCL, 136 fonts for PS (with optional AR-PK1)

Other features:

Paper/output tray selection, duplex print, watermarks, pamphlet style, staple (3 patterns), job retention for confidential sample print, N-up, B&W reverse, mirror image, form overlay, fit to page, auto configuration, easy print (stores settings), confidential print, sample print. Note: some features are not available according to the printer driver used.

Print Server Card (optional AR-NC5J)

Hardware interface:	10Base-T, 100Base-TX
Support platforms:	UNIX, Windows 95/98/Me, Windows NT 4.0, Windows 2000, Novell Netware 3.x/4.x (IntranetWare)/Netware5, Macintosh System 8.5.1-9.x
Network protocols:	IPX/SPX for Novell environments, TCP/IP for Windows and UNIX environments, EtherTalk for Macintosh environments
Printing protocols:	Novell Printserver Application w/ NCS and Bindery, Printer resident LPD (includes reaction to LQP request), TCP FTP for downloading of print files, EtherTalk printing, IPP, NetBEUI for Windows

Design and specifications are subject to change without notice. Sharp is a registered trademark of Sharp Corporation.

All trademarks and registered trademarks are of their respective holders.

²At rated voltage, 20°C (68°F), 65% RH.

³Dimensions and weight include multi-purpose trays.

SHARP
FROM SHARP MINDS
COME SHARP PRODUCTS™

SHARP ELECTRONICS CORPORATION
Network Office Systems Group • Sharp Plaza, Mahwah, NJ 07430-2135
1-800-BE-SHARP • www.sharp-usa.com



As an ENERGY STAR® Partner, SHARP has determined that this product meets the ENERGY STAR® guidelines for energy efficiency.